

essential
DESIGN + BUILD



+design services

- programming
 - adjacency studies
 - space plans/block diagrams
 - development of work letter
 - budget estimates
- schematic design
 - floor layout plans
 - mechanical/electrical systems
 - building code analysis
 - furniture inventory
 - workstation studies
 - estimate of probable cost
 - 3d renderings
 - presentation booklets
- design development
 - plans, elevations, and details
 - color and finish selection
 - furniture/materials selection
 - lighting design
 - estimate of probable cost
 - 3d renderings
- contract documents
 - construction drawings
 - permit drawings
 - MEP coordination
- interior decorating services
 - finish selection
 - furniture packages
 - artwork selection

+construction services

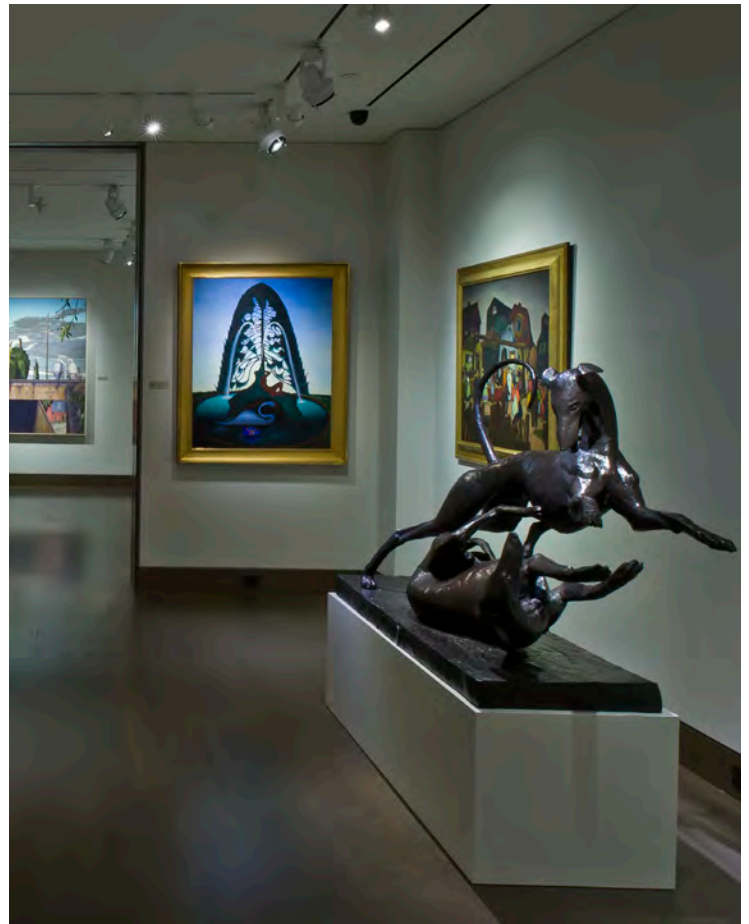
- general contracting and construction management
 - contract negotiations
 - construction schedules
 - FF&E coordination/schedules
 - shop drawing review
 - site observation/supervision
 - substantial completion certification
 - punch list
 - final payment certification
- subcontracting
 - drywall
 - doors, frames, and hardware
 - acoustical ceiling
 - millwork
- owner's representation

+facilities

- evaluation
 - feasibility studies
 - space allocation studies
 - square footage evaluation
 - building code analysis
 - estimate of probable cost
- development
 - partition plans
 - tenant demising plans
 - corporate space allocations
 - departmental boundary plan
 - equipment plans
 - inventory reports
 - tenant/vacancy reports
 - lease tracking record
 - area calculation reports by tenant, floor, and building

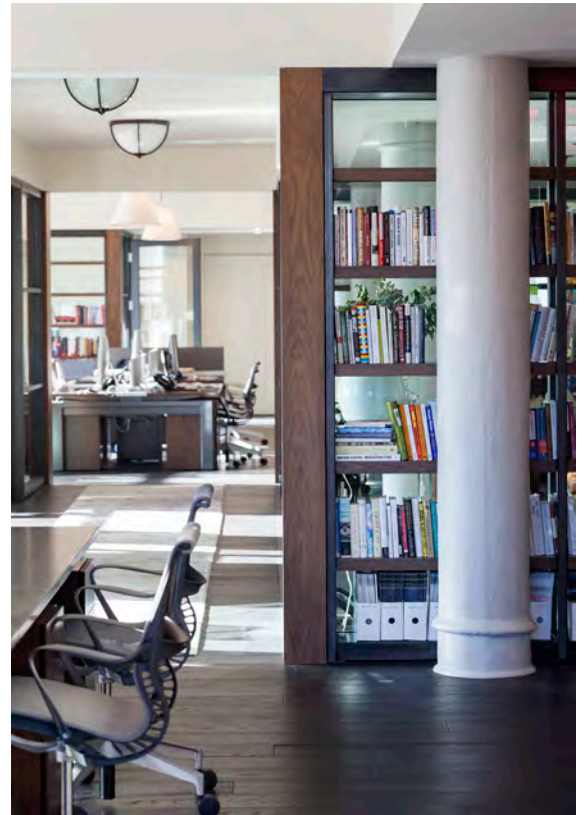
+sustainability

- sustainability studies
- energy rebates
- green specifications
- LEED certification feasibility
- NYSERDA rebate applications





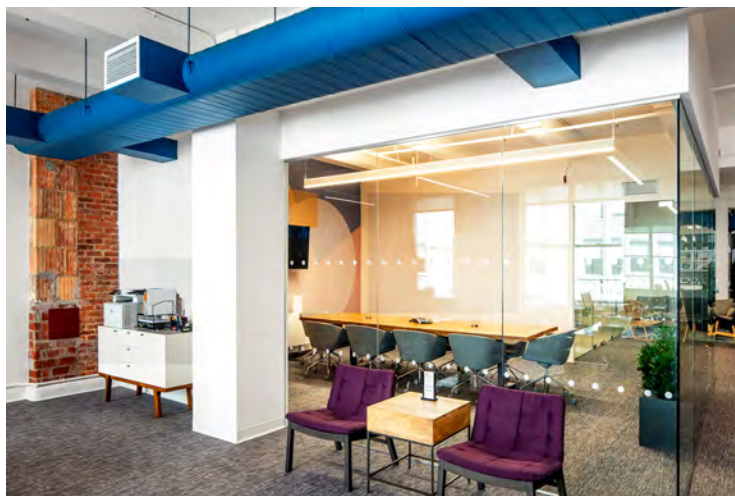


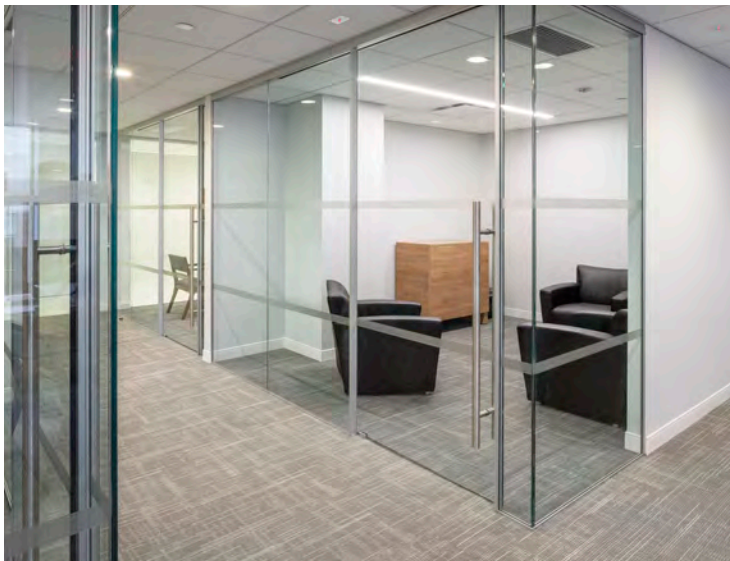
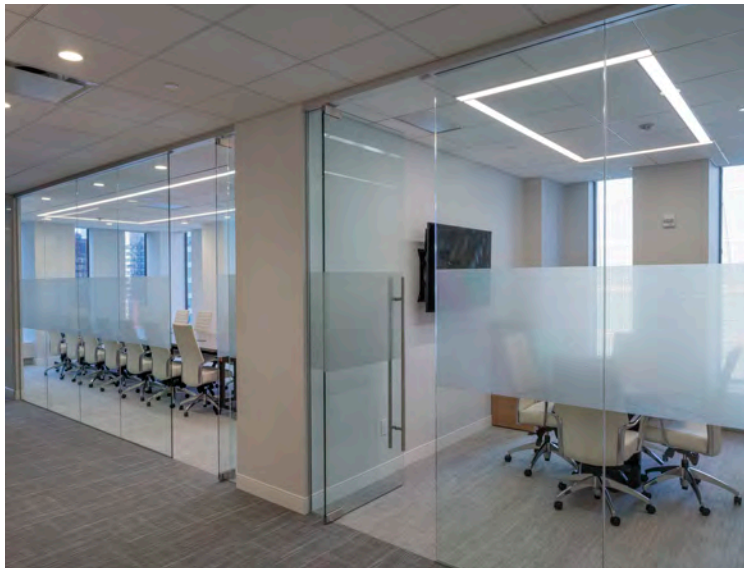




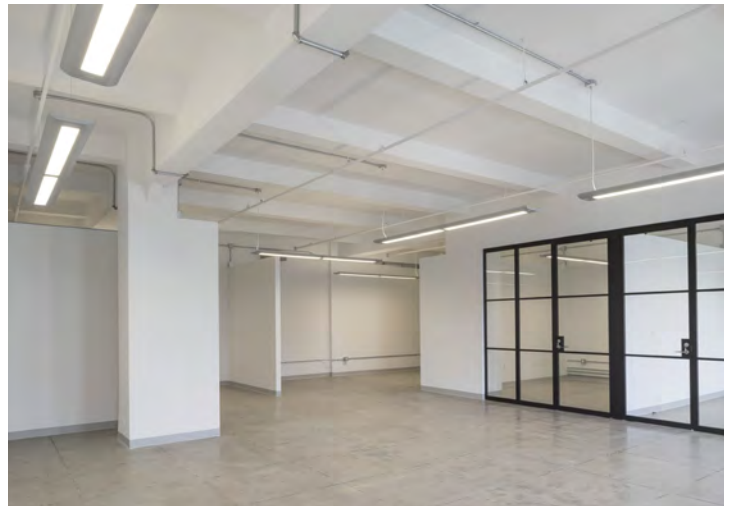




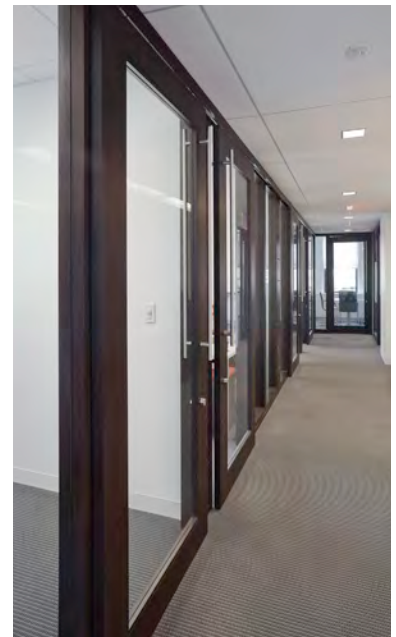




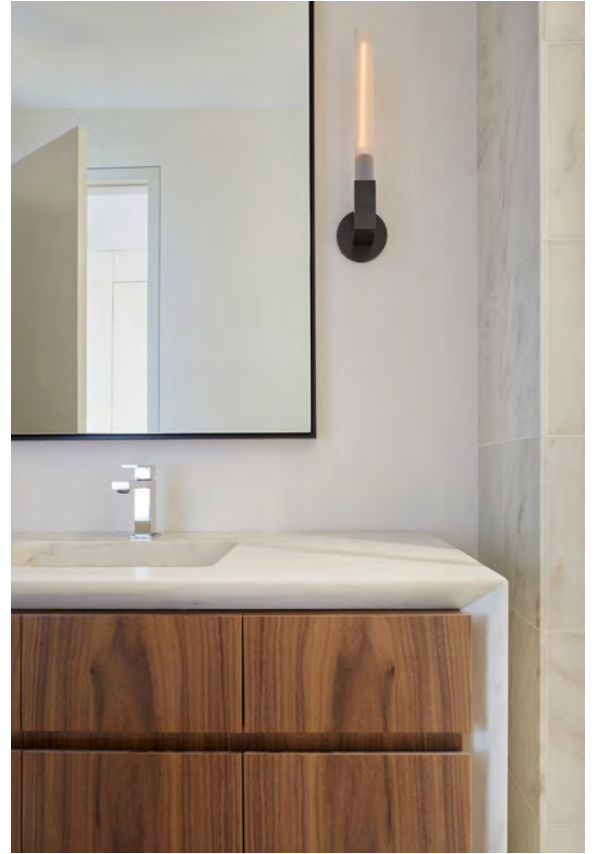


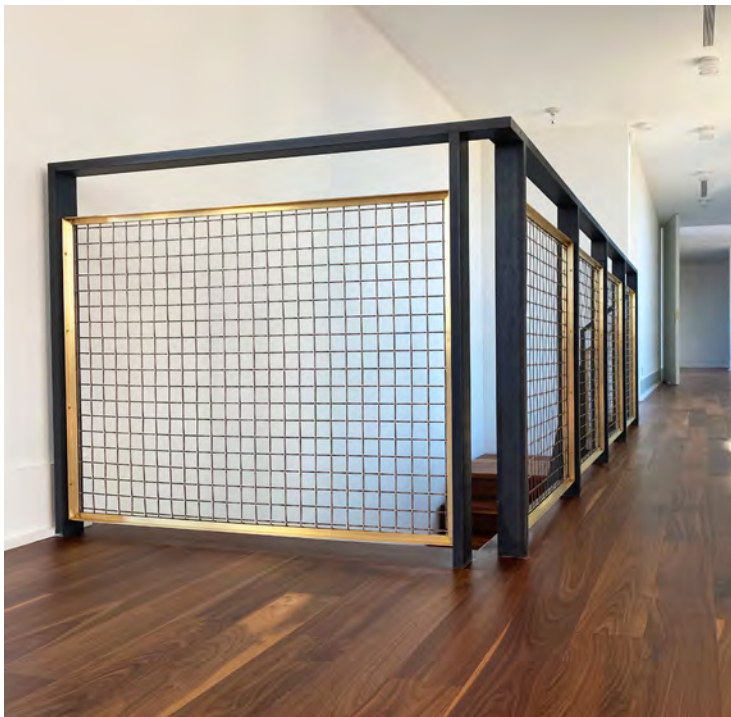
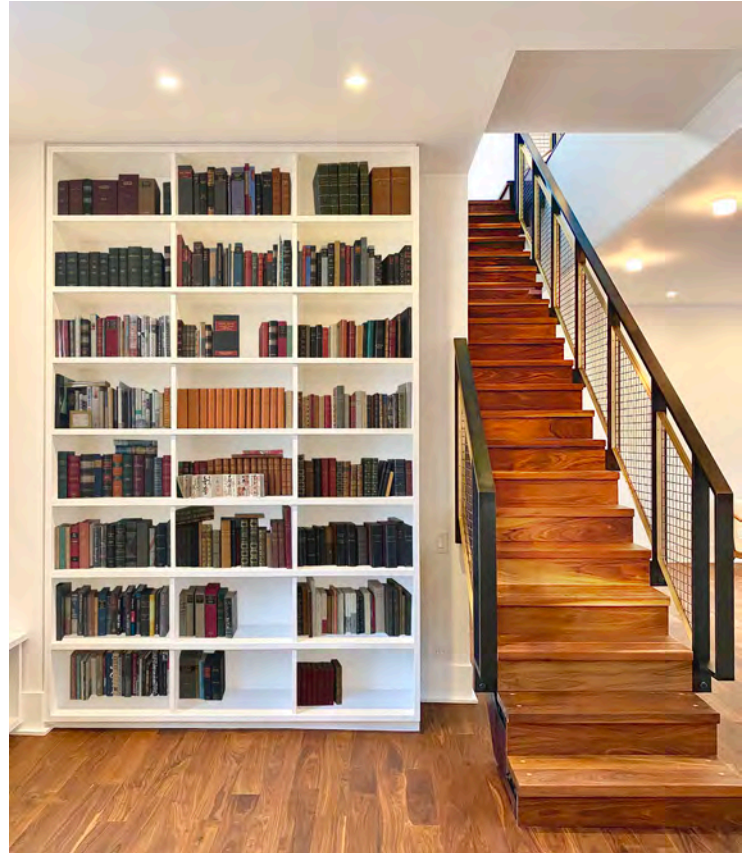


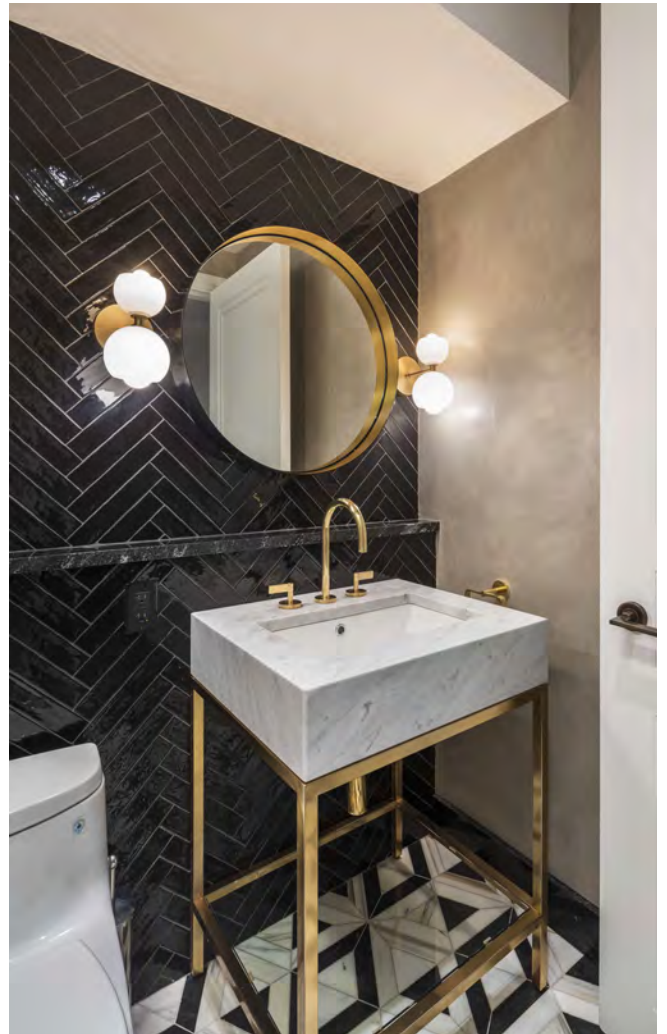




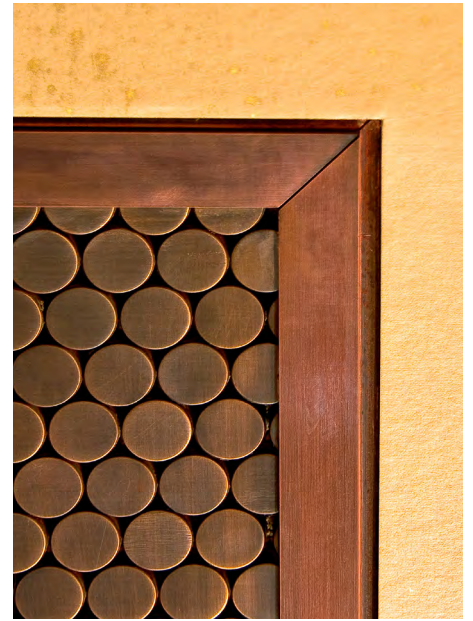


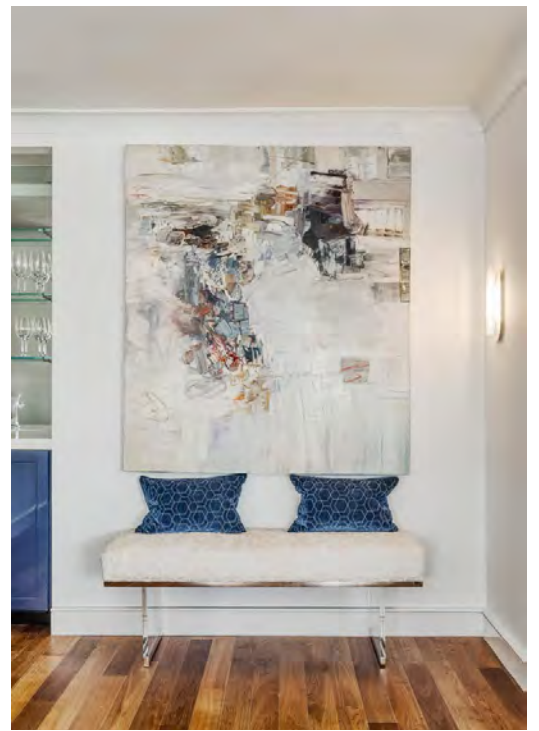


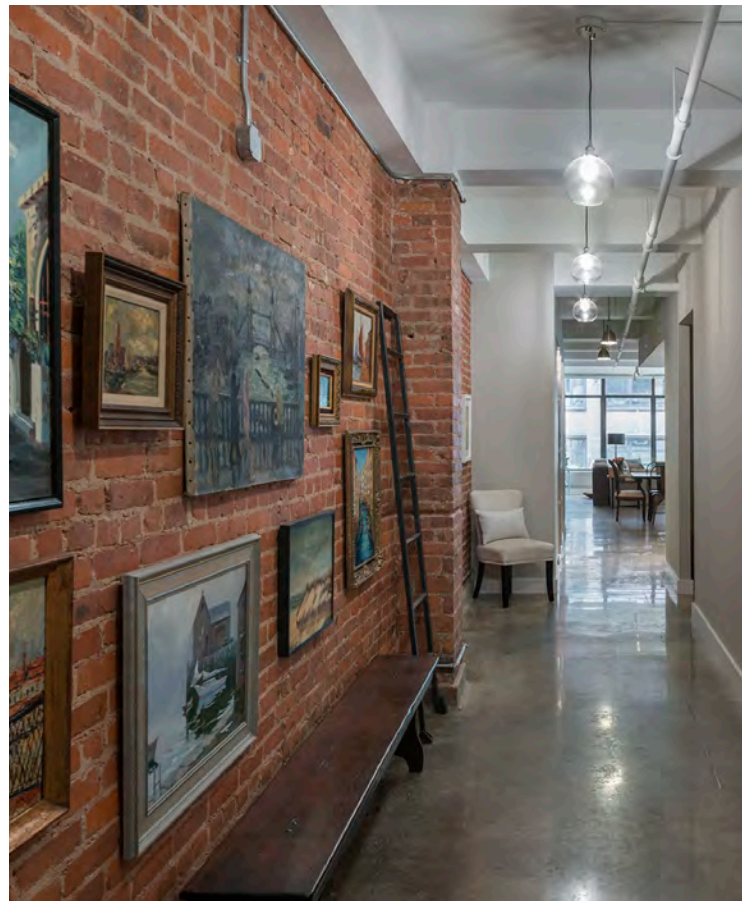


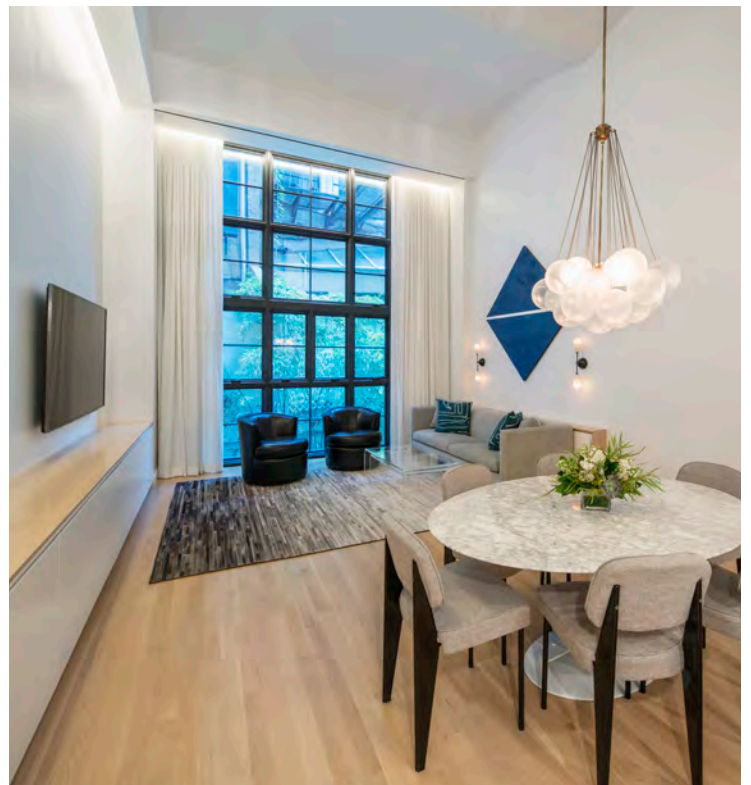
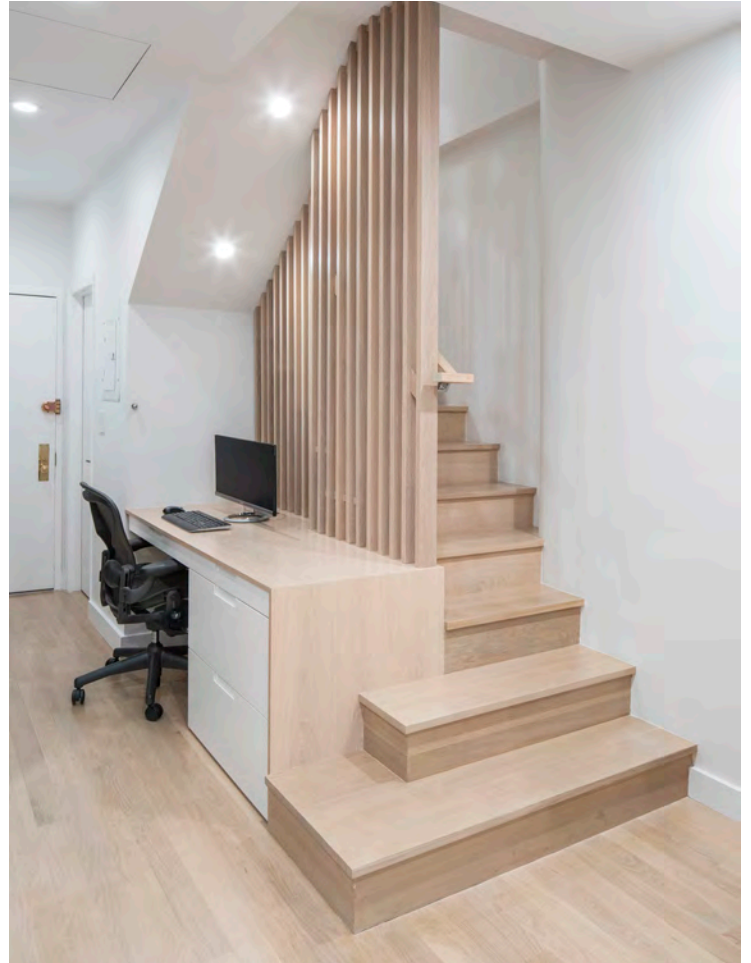
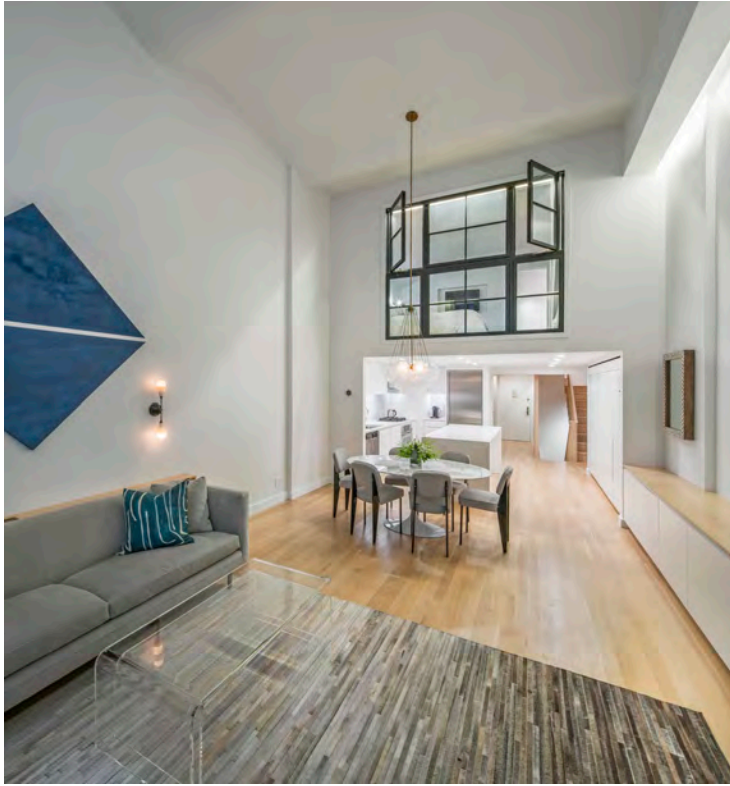


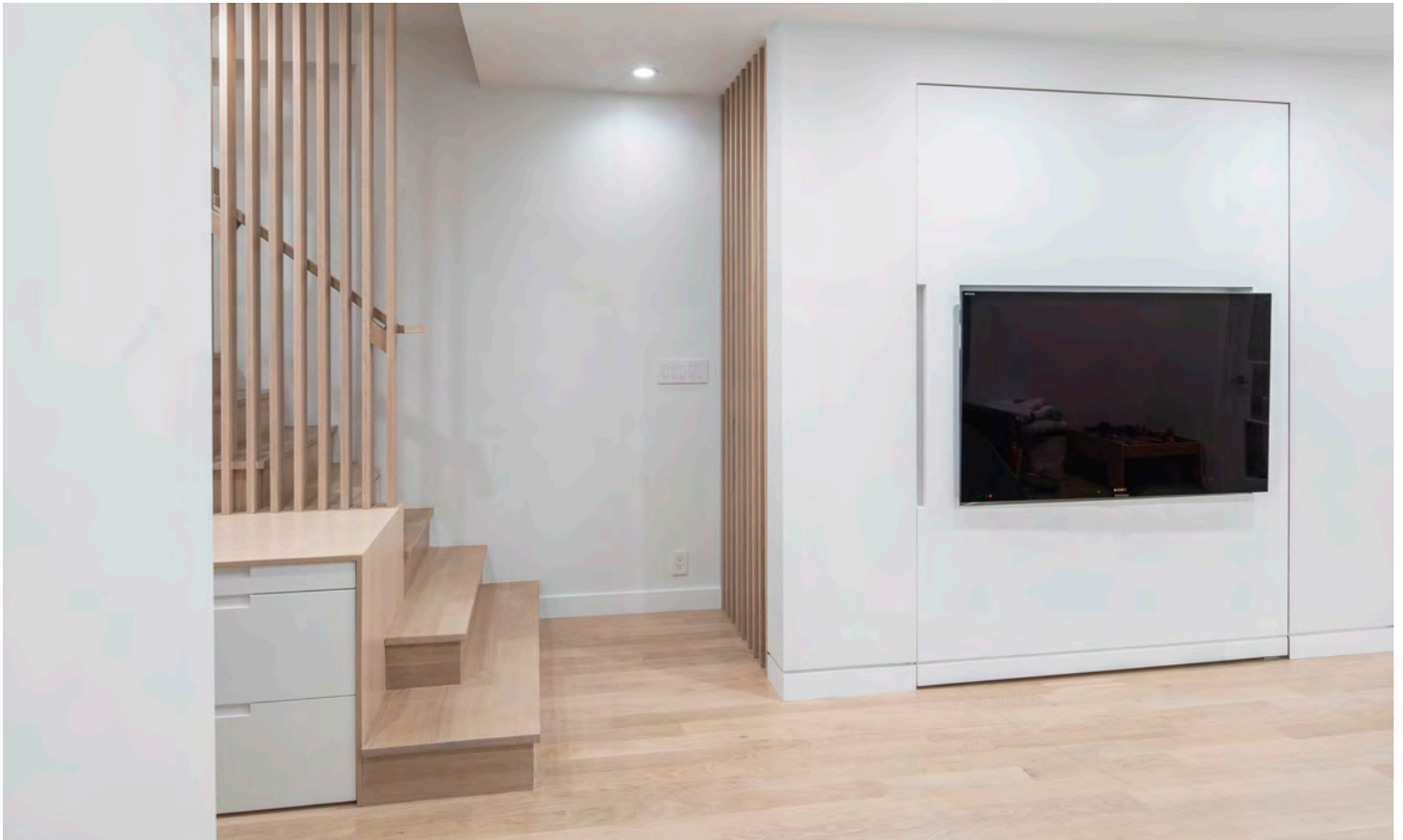
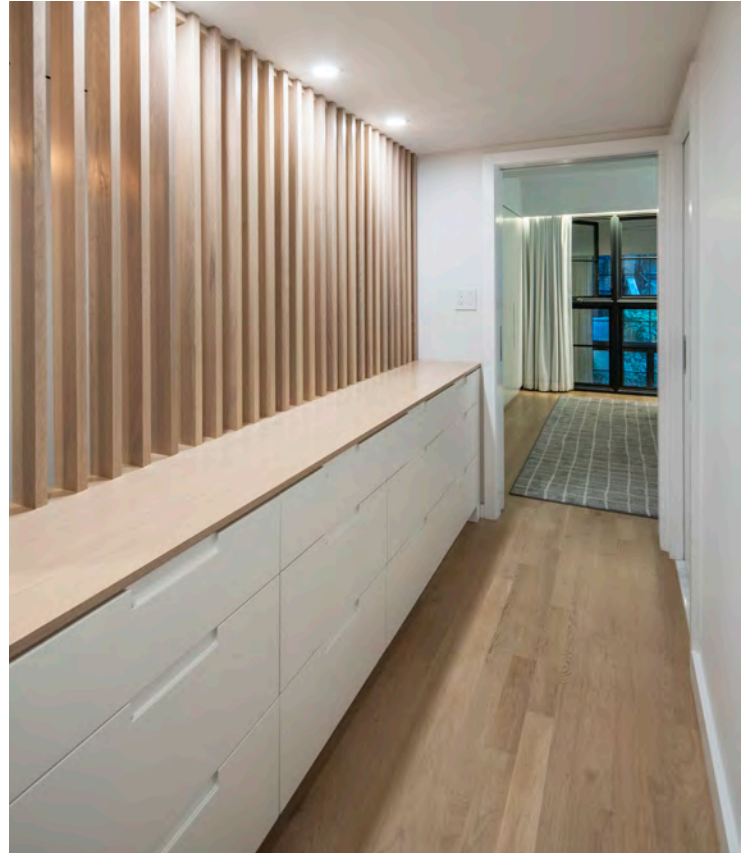


















accounting firms

A.R. Schmeidler & Co.
ADP National Account Services
Raines & Fischer LLP

art galleries

Ameringer & Yohe Fine Art
Earl McGrath Gallery
Franklin Parrish Gallery
Hirschl & Adler Gallery
Laurence Miller Gallery

corporate clients

Alison Brod Public Relations
Consolidated News Print
Douglaston Development LLC
DTZ Rockwood
Dwellworks
Fidelity Mutual Life Insurance
Grainger Collectibles
Madison Avenue Capital Group
Playboy Enterprises, Inc.
SKYY Spirits LLC
Diptyque Paris
Reem Bridals, LLC
Thom Browne, Inc.
Mikasa/ Lifetime Brands

design firms

Mada Design
Stephen B. Jacobs Group, PC
Atema Architecture PLLC
Morris Adjmi Architects
Selldorf Architects

law firms

Abrams, Fensterman, Eisman, Greenberg, Formato & Einiger
Levy, Sonet, & Siegel
Warshaw Burstein Cohen Schlesinger & Kuh, LLP
Archer & Greiner PC
Cox Padmore Skolnik & Shakarchy LLP

building lobbies, entrances, concierge, curtain walls, etc.

555 Fifth Avenue
630 Third Avenue
240 W 35th Street
20 West 57th Street
40 Central Park South
41 West 58th Street

residential projects

40 Central Park South
Briarbrook Drive, Briarcliff Mansion, NY
Manursing Island, Rye, NY
Greenway South, Forest Hill Gardens, NY
The Montauk Tower
158 Mercer Street Penthouse

restaurants

Relish
Atlas Restaurant
Cars & Cigars
Mickey Mantle's

travel

Britrail Travel
Cunard Line Limited
Isram Travel
Travel Planners Inc

retail

Christofle Silver Inc.
Rossimoda USA Ltd.
The Shops at Atlas Park
L'Occitane en Provence
Barnes & Noble

consulates and diplomatic missions

Consulate General of Uzbekistan
Permanent Mission of Slovenia

schools and non profit organizations

Fight for Sight
Juvenile Diabetes Foundation
Michael J. Fox Foundation for Parkinson's Research
NY Institute of Business Technology
NYC Police Foundation

out of state

Office of Veteran's Affairs
The Totowa Business Center
Bank of Darien

media companies

Golf Magazine
Hearst/ABC Video Inc
Horizon Media Inc.
The New Republic
Superfly Productions

+ please visit our website to view a complete list of clients +





Essential Design + Build is a turn-key contractor with full architectural, construction, interior design, and decorating expertise. Driven by Years of experience and astute attention to detail, our versatile team collaborates directly with clients on design, planning and implementation to achieve award-winning results.

Our office staff consists of architectural designers, interior designers, decorators, project managers, field superintendents and Department of Buildings expeditor. In the field, we retain a full crew of carpenters, millworkers and laborers. Our full range of services can be tailored to suit any space in the commercial, residential, retail, hospitality and industrial sectors. We regularly update our software and exposure to new materials in order to maintain cutting-edge capabilities in designing and rendering innovative projects for our clients.

As a certified US Green Building Council Contractor, we are able to provide sustainable construction that respects environmental integrity. Additionally we have LEED accredited staff members on our team.

Our experienced architectural designers work with established and respected manufacturers and fabrication studios, ensuring that upon completion of construction, our clients will be rewarded with distinctive and skillfully crafted spaces. The unique diversity of our personnel allows us to both complement one another's skills and to challenge each other creatively and professionally.

Formerly known as Atco Construction, we have built a solid reputation for top-quality craftsmanship since 1971.

Contractor License #1428009